



Real-time HK Stock streaming price (L1) on our Wealto Mobile App at HK\$68 per month only!

HKEx has announced a new market data service plan for mobile devices only which will commence on 1 Oct 2021. All our Wealto Mobile clients can enjoy this plan upon subscription.

MOBILE DEVICE ONLY MARKET DATA SERVICE PLAN DETAILS

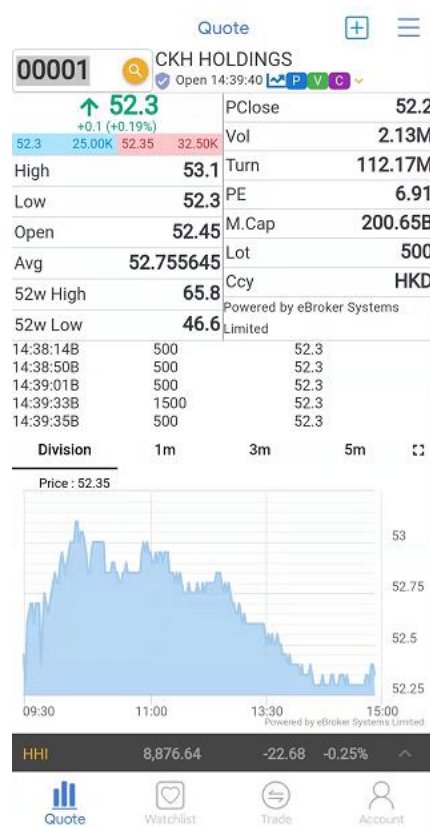
TARGET	All investors
EQUIPMENT	Mobile devices
SERVICE DETAILS	Real-time Level 1 market data of Hong Kong stocks
CHARGING	Each subscriber is charged HK\$68.00 per month (HKEx Screen Levy
METHOD	included)

Contact us to for free system upgrade: New <Stream Mobile> data plan will be available for selection in Market Data Subscription function in WebSysAdmin.

Account	Exchange	Subscription Name	None	Subscribe
202102003	Hong Kong	Stream	<input type="radio"/>	<input type="radio"/>
202102003	Hong Kong	Stream Mobile [2021-10-14 ~ 2021-12-31]	<input type="radio"/>	<input checked="" type="radio"/>
202102003	Hong Kong	Stream China	<input type="radio"/>	<input type="radio"/>
202102003	Hong Kong	Stream China(M)	<input type="radio"/>	<input type="radio"/>
202102003	Hong Kong	Per-Click	<input type="radio"/>	<input type="radio"/>



➤ New Mobile Plan display in Wealto App:



In addition, we provide other market data plans to fulfill the needs of different investors as in below table:

Highlight of our Market Data Plans

- | | |
|---|---|
| <p>1 Real-Time Quotes (International Plan)</p> <p>Suitable for: Investors in Hong Kong</p> <p>Package details: Real-time level II market data for Hong Kong stocks</p> <p>Charge mode: Monthly charge per subscriber</p> | <p>2 Real-Time Quotes (Chinese Discount Plan)</p> <p>Suitable for: Investors in Chinese mainland</p> <p>Package Details: Real-time level II market data for Hong Kong stocks</p> <p>Charge mode: Monthly charge per subscriber</p> |
| <p>3 Delayed Data</p> <p>Suitable for: Brokers</p> <p>Package details: Market Data for all Hong Kong stocks with delay of at least 15 minutes</p> <p>Charge mode: Monthly charge per broker</p> | <p>4 SnapShot Quotes</p> <p>Suitable for: All investors</p> <p>Package details: Per Click level I market data for Hong Kong stocks</p> <p>Charge mode: Monthly charges depending on the number of clicks usage</p> |